

## Mali - Gao Region - Gao

Gao is the Capital of the Gao region and located at the Niger River. The River builds a natural barrier to the expansion of the city to the West.

The Area of Gao East was chosen for this analysis because it is located in the north of the Airport which was important for delivering important goods and which was protected by the Mali military.

Gao was one of the most important destinations of IDPs in Mali, since it was considered a safe city protected from the conflict.

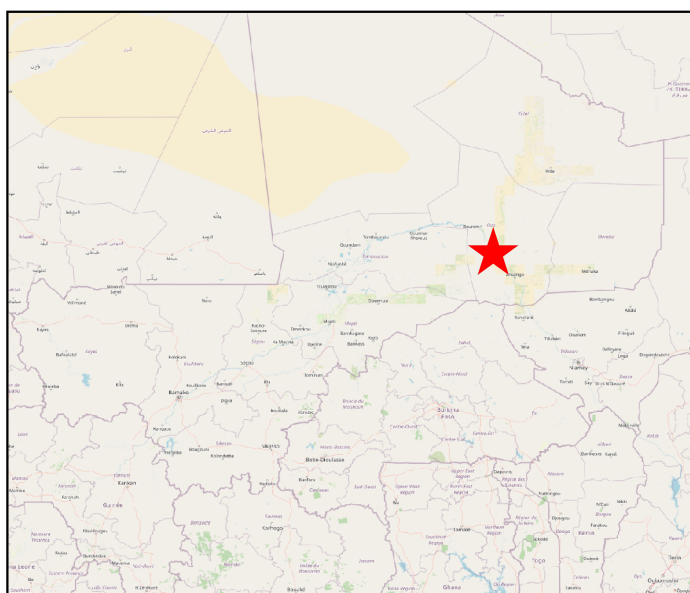
The yellow layer shows new shelters in the period between 2018-12-28 and 2020-10-03.

For the analysis, Super Resolution Sentinel 2 Images were used. The vegetation in the image can be seen in red (NIR Band).

## LEGEND

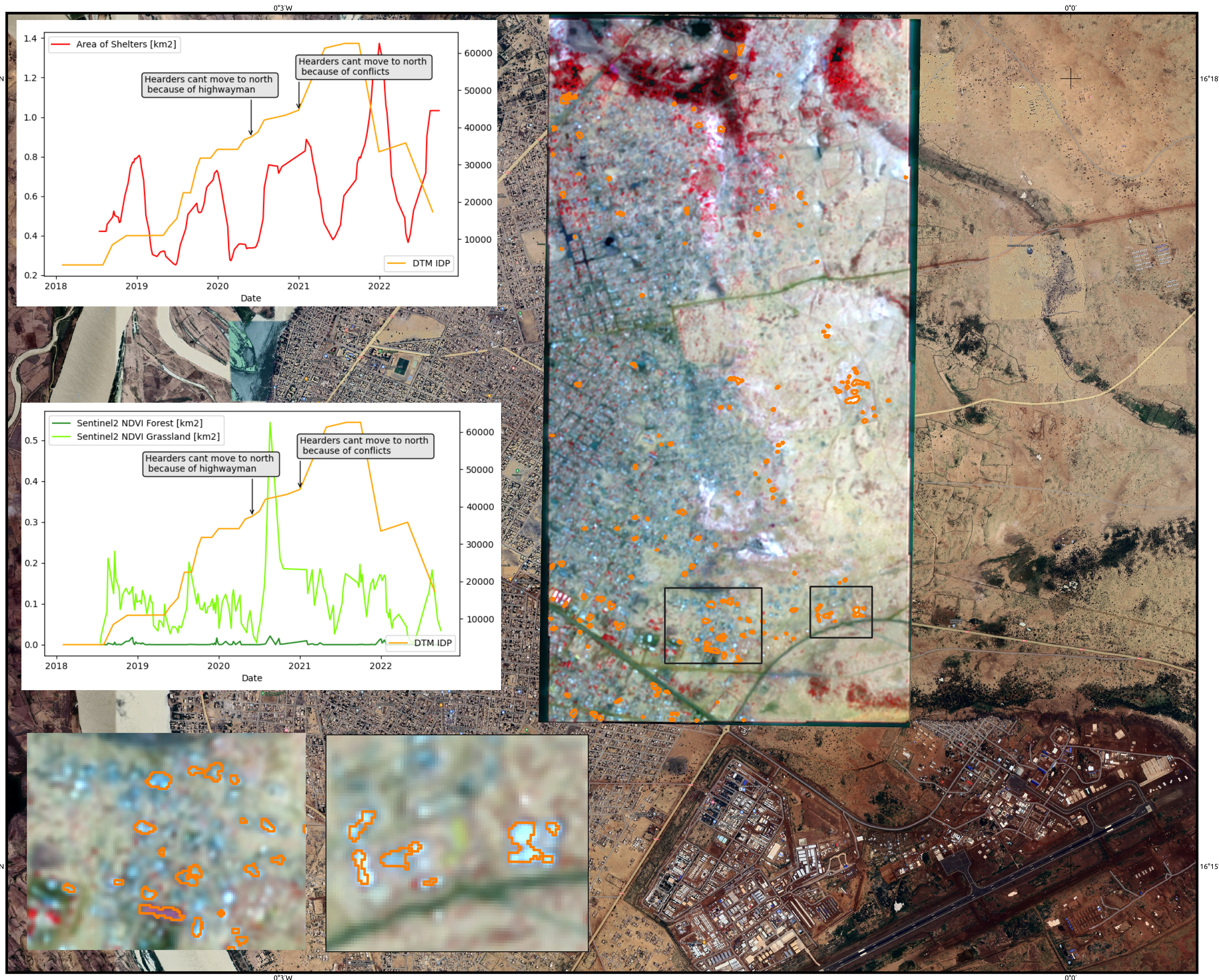
2018-2022 New Shelters and Buildings

## LOCATION



## SOURCES

Dataset : Sentinel 2 NRGB Super Resolution  
 Acquisition : 2018-12-28 and 2022-10-03  
 Institution : ESA  
 Baselayer: Googlemaps Satellite Hybrid



0 0,5 1 km

Tick mark : WGS 84 geographical coordinate system

