

Mali - Bamako - Commune iV

Bamako is the Capital in Mali and largest City of the country, with a 2009 population of 1,810,366 and an estimated 2022 population of 2.81 million. The River Niger is crossing the city.

The Area of Analysis in Bamako was chosen because of the informal Camp Faladie which was destination for many IDP. The Camp and its expansion can be seen on the zoom in the north of the image.

The formation of the Camp Faladie started in December 2019. A few weeks later 37 civilians were killed in Koulogon which is said to be one of the events which made people migrate to Bamako. In 2019 authorities tried to relocate IDP from the Camp Faladie to Mabile which was not successful. On 28 Apr 2020 a fire hit the Camp and destroyed many of the tents.

Report and Images from the Camp showed that many of the IDPs brought their herds to the Camps. The analysis could not prove a decrease of Vegetation in that area due to overgrazing of this herds.

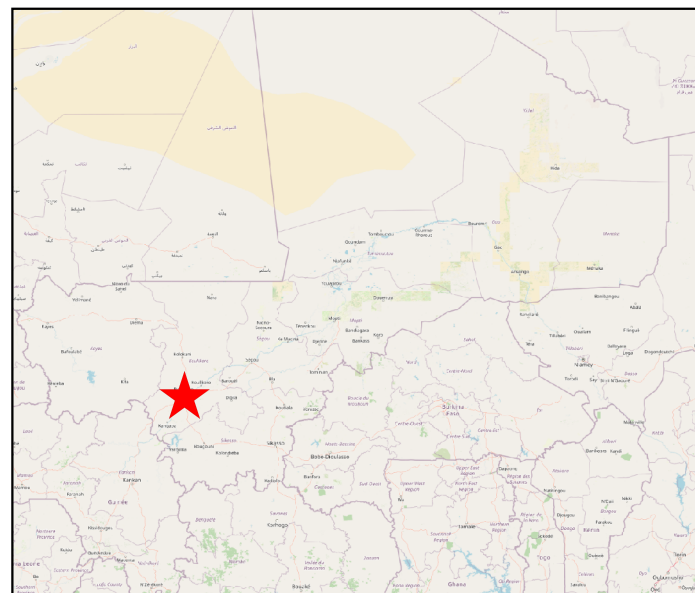
The orange layer shows new shelters and settlements in the period between 2019-10-03 and 2022-09-27.

For the Analysis a Super Resolution Sentinel 2 Images were used. The Vegetation in the Image can be seen in red (NIR Band).

LEGEND

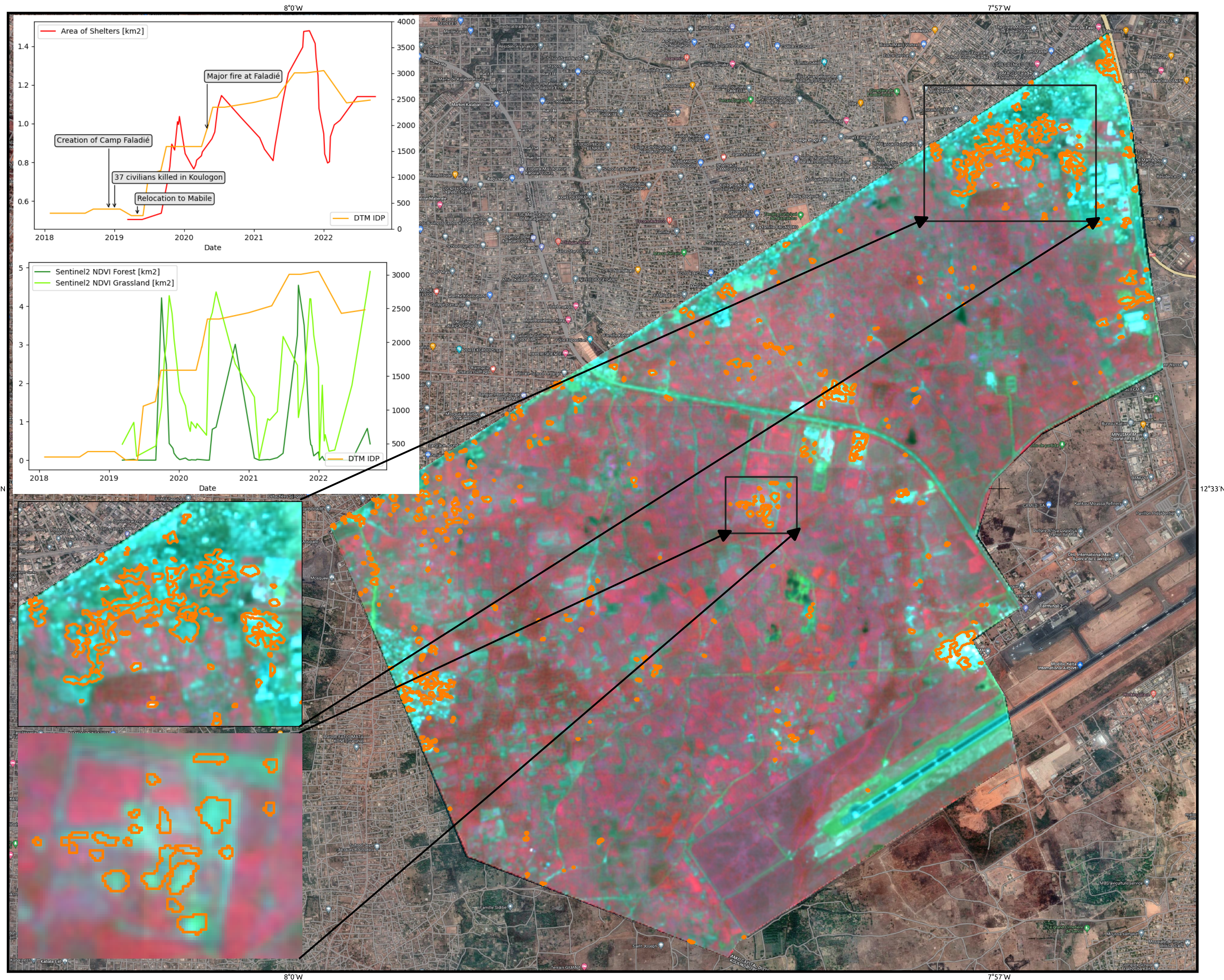
 2019-2022 New Settlements and shelters

LOCATION



SOURCES

Dataset : Sentinel 2 NRGB Super Resolution
Acquisition : 2019-10-03 and 2022-09-27
Institution : ESA
Baselayer: Googlemaps Satellite Hybrid



0 0,5 1 km

Tick mark : WGS 84 geographical coordinate system

